

Social Work's Role in Achieving Health Equity

Presented by:

Christina Crow Cruz, DSW, LCSW and Joe Seiders, LCSW

October 18, 2022



crowc@slhs.org and seidersj@slhs.org



*"Of all the forms of inequality,
injustice in health care is the most
shocking and inhumane."*

— Dr. Martin Luther King, Jr.

Health Equity

Equality



The assumption is that **everyone benefits from the same supports**. This is equal treatment.

Equity



Everyone gets the supports they need (this is the concept of "affirmative action"), thus producing equity.

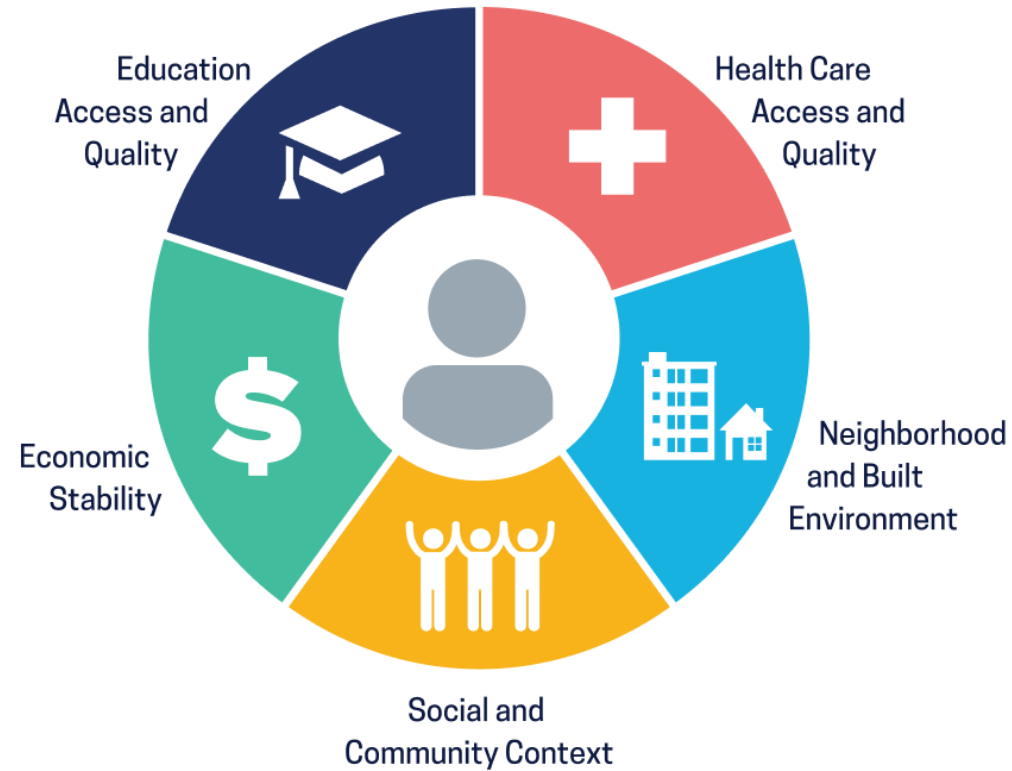
Justice



All 3 can see the game without supports or accommodations because **the cause(s) of the inequity was addressed**. The systemic barrier has been removed.



Social Determinants of Health



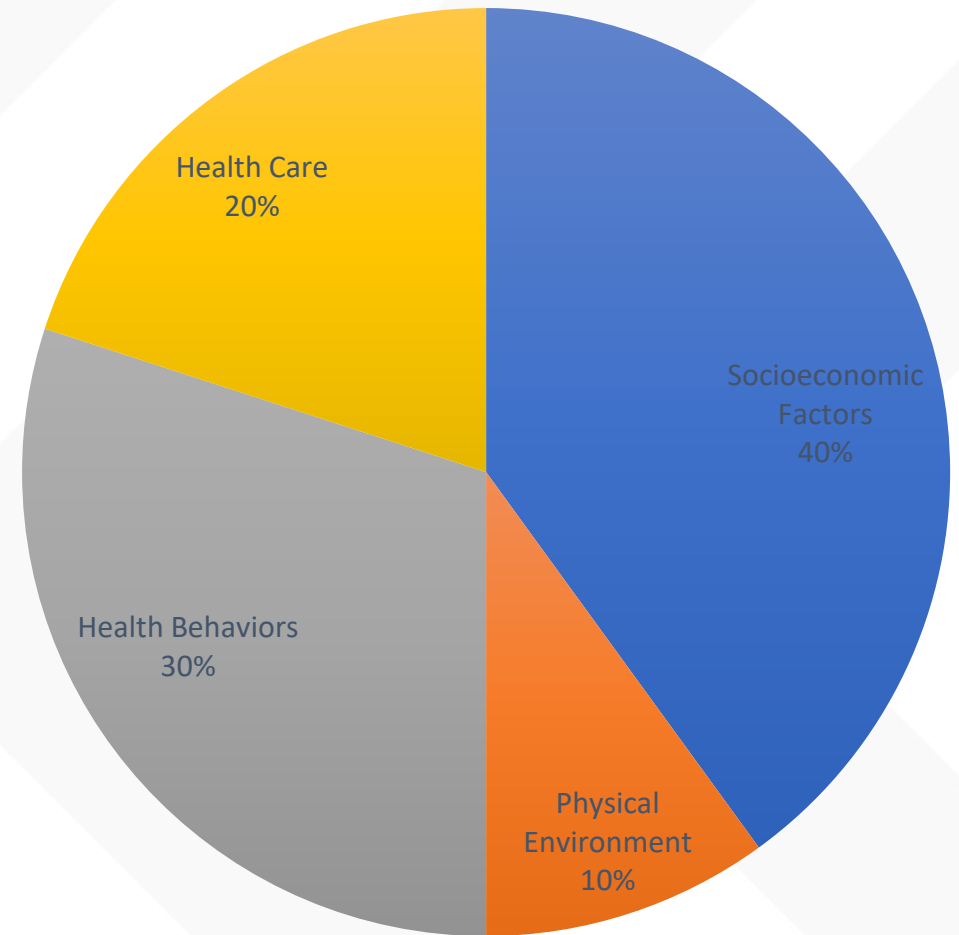
Social Determinants of Health
Copyright-free

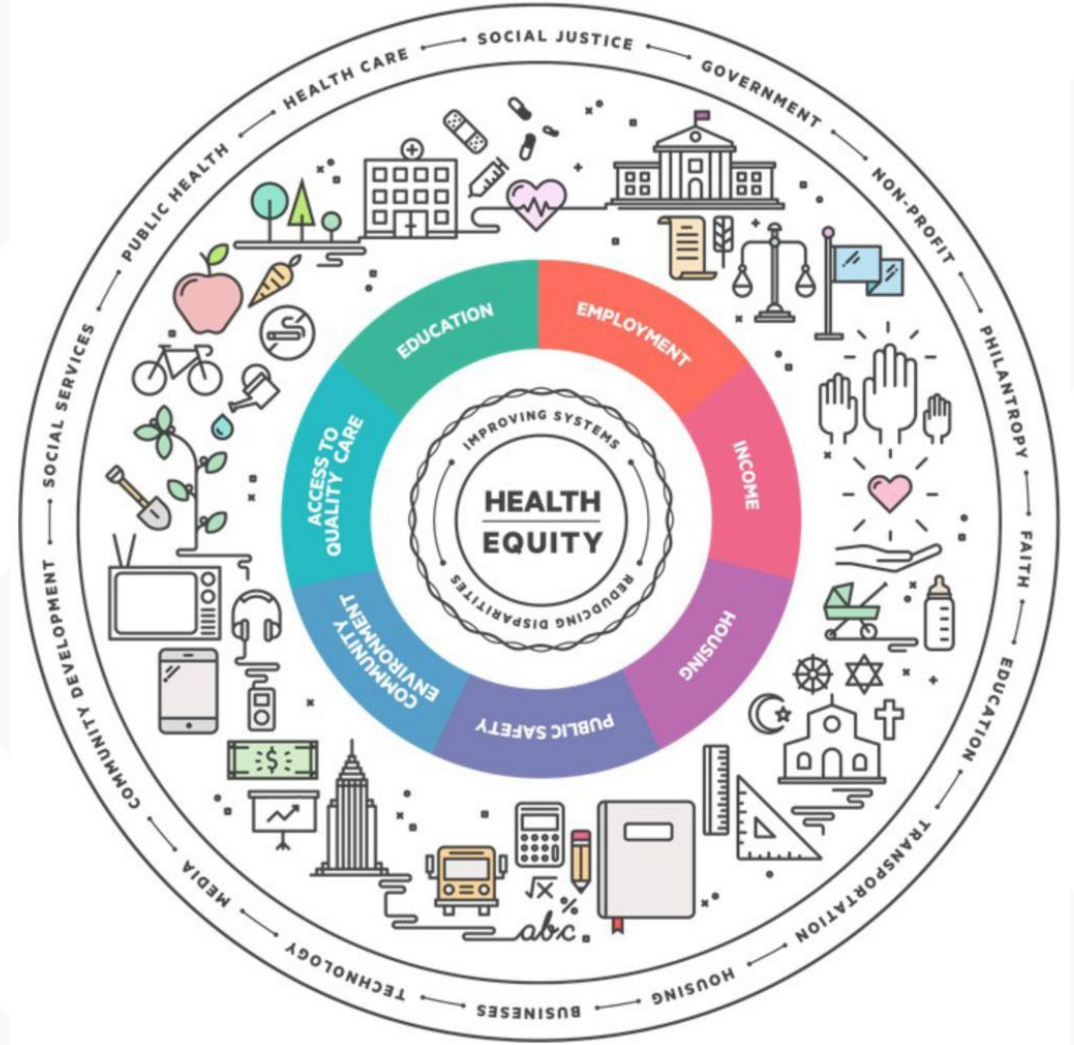
 Healthy People 2030



Impact on health

*80% of our health is determined
by societal factors*





Impact



Social Work's Role



What after all, has maintained
the human race on this old globe
despite all the calamities of nature
and all the tragic failings of mankind,
if not **faith in new possibilities,**
and **courage to advocate** them?

– *Jane Addams*

AZ QUOTES



“SOCIAL WORK MUST TAKE BOLD, DELIBERATE ACTIONS THAT BEND THE ARC OF JUSTICE TOWARD LIBERATION FOR ALL.”

Mildred “Mit” C. Joyner (NASW President)

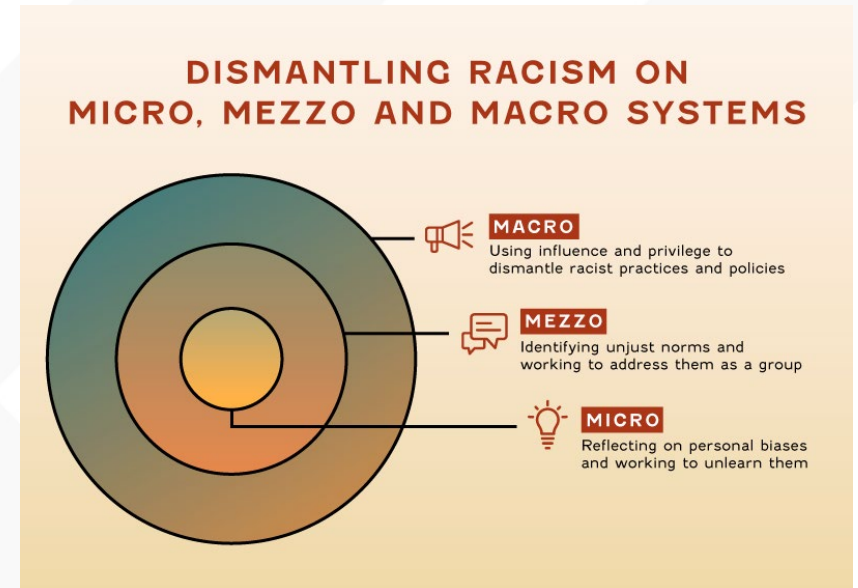
Anti-Racism

“Not everything that is faced can be changed, but nothing can be changed until it is faced.”

– James Baldwin

5-Ways to be Anti-Racist

1. *Hold yourself, your friends, and your family accountable*
2. *Attend continuing education and other events that focus on race-related issues*
3. *Diversify your knowledge and check your information bias*
4. *Have intentional conversations with peers, co-workers, etc. with respect to each other's boundaries*
5. *Learn with humility*



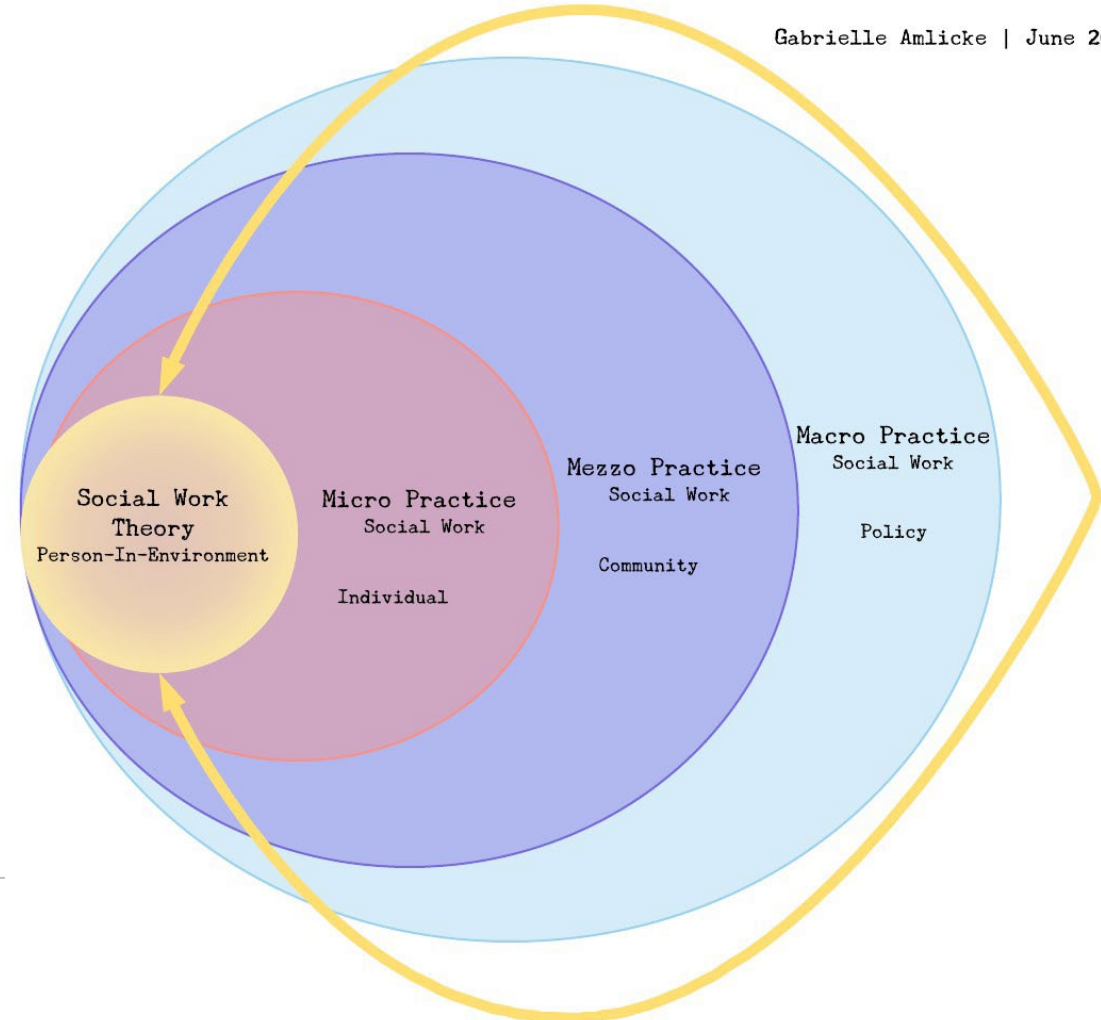
Revisiting the Micro/Mezzo/Macro framework

It is all related – It is all (PIE)

- Health disparities and inequities exist in every area of practice

Systems and Theory: What Links the Roles of Social Workers Together?

Gabrielle Amlicke | June 2019



Macro

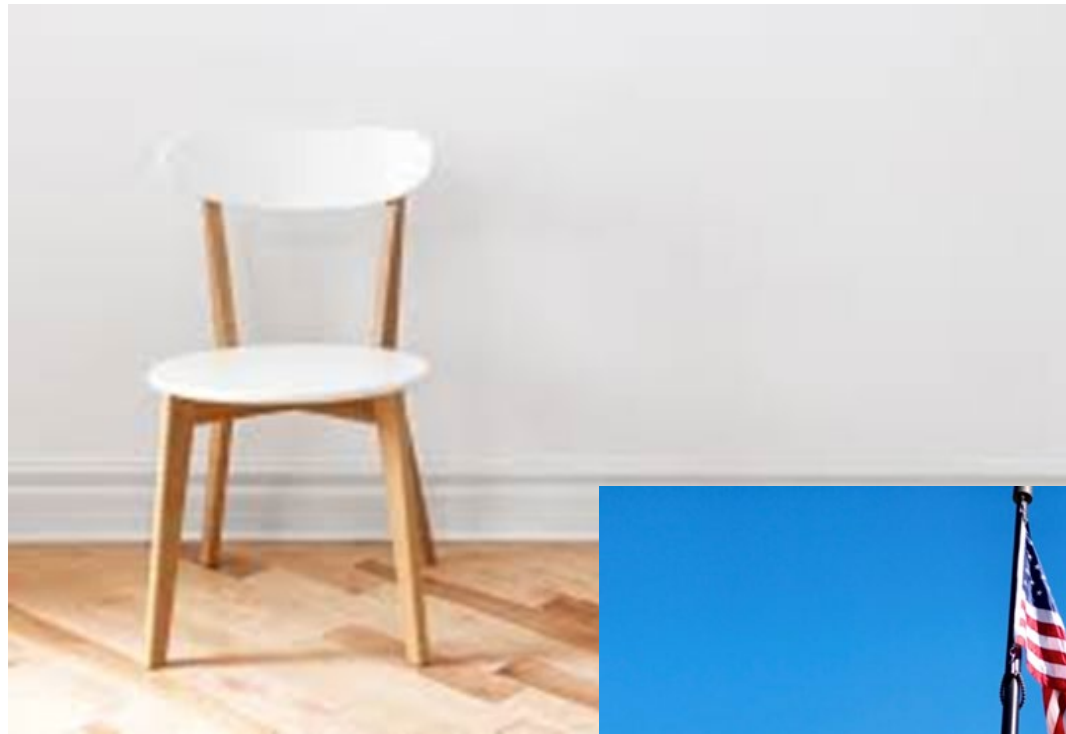
Larger Systems - State/National

- Alleviating societal problems
 - *Improve quality of life, locally, nationally, and internationally.*
- Confront realities on a systems level
 - *What caused this? How do we prevent it?*
 - *Policy/Legislation/Research/Data*



Mezzo

- Groups
- Community Systems
- Organization
- Collaboration
- Programing
- Planning
- Problem solving



Micro



- Individuals
- Family/Supports
- Groups
- “Direct Services”
- “Immediate needs”



Culturally Competent Care

Cultural humility/Cultural Safety/Structural Competence

Acknowledge and recognize inequities

Work to eliminate bias

Participatory assessment and decision making

Increase diversity of the workforce

Raise awareness of health inequities



“What is learned here leaves here”

As an alternative to “Key take aways”

- Utilize critical self-reflection
- Stay informed
- Actively engage

✓ *I will...*



“Each time a [person] stands up for an ideal, or acts to improve the lot of others, or strikes out against injustice, [they] send forth a tiny ripple of hope, and crossing each other from a million different centers of energy and daring those ripples build a current that can sweep down the mightiest walls of oppression and resistance.”

—Senator Robert F. Kennedy



Resources

- American Academy of Social Work & Social Welfare (2016). Health Equity: Eradicating health inequalities for future generations. Retrieved from: [Health Equity: Eradicating Health Inequalities for Future Generations \(grandchallengesforsocialwork.org\)](https://grandchallengesforsocialwork.org/Health-Equity)
- American Medical Association (2021). Advancing Health Equity: A guide to language, narrative and concepts. Retrieved on January 14, 2022 from: [Advancing Health Equity: A Guide to Language, Narrative and Concepts \(ama-assn.org\)](https://www.ama-assn.org/advancing-health-equity)
- American Medical Association (2012) AMA Code of Medical Ethics' Opinion on Cultural Sensitivity and Ethnic Disparities in Care. Retrieved on January 14, 2022 from: [AMA Code of Medical Ethics' Opinion on Cultural Sensitivity and Ethnic Disparities in Care | Journal of Ethics | American Medical Association \(ama-assn.org\)](https://www.ama-assn.org/ama-code-of-medical-ethics-opinion-on-cultural-sensitivity-and-ethnic-disparities-in-care)
- American Academy of Family Physicians (2021). *Health Equity*. Retrieved on January 3, 2022 from: [Health Equity \(aafp.org\)](https://aafp.org/health-equity)
- Bing images. Health Equity. Retrieved from: [Health Equity - Bing images](https://www.bing.com/images/search?q=Health+Equity&FORM=ISRECH)
- Bing Images. Health Equity. Retrieved from: [Health Equity - Bing images](https://www.bing.com/images/search?q=Health+Equity&FORM=ISRECH)
- County Health Rankings (2014) County Health Rankings Model. Retrieved on January 28, 2022 from: [CHRRmodel.png \(3900×4350\) \(countyhealthrankings.org\)](https://www.countyhealthrankings.org/models/CHRRmodel.png)
- Dawes, D. (2020). *Political Determinants of Health*. Johns Hopkins University Press.
- Deloitte Insights (2022). Mobilizing toward health equity: action steps for health care organizations. Retrieved on January 12, 2022 from: [Prioritizing DEI in health care | Deloitte Insights](https://www.deloitte.com/us/en/insights/industry/healthcare/mobilizing-toward-health-equity.html)
- Department of Justice (2010). Americans with Disabilities Act Title III Regulations. Retrieved on January 17, 2022 from: [Americans with Disabilities Act: Title III Regulations \(ada.gov\)](https://www.ada.gov/t3regulations/)
- Evans, M, Rosenbaum, L., Malina, D. Morissey, S., Rubin, E. (2020). Diagnosing and treating systemic racism. *The New England Journal of Medicine* 383;3.
- Glicksman, E. (2019). Your diagnosis was wrong! Could doctor bias have been a factor? Retrieved on January 12, 2022 from: [Doctor implicit bias can lead to misdiagnoses - The Washington Post](https://www.washingtonpost.com/your-diagnosis-was-wrong-could-doctor-bias-have-been-a-factor/2019/01/12/)
- Grand Challenges for Social Work (2021). Eliminate Racism. Retrieved on January 28, 2022 from: [Eliminate Racism \(grandchallengesforsocialwork.org\)](https://grandchallengesforsocialwork.org/eliminate-racism)
- Health Affairs (2022) The Intellectual Roots of Current Knowledge On Racism and Health Relevance To Policy And The National Equity Discourse. Retrieved on February 21, 2022 from: [The Intellectual Roots Of Current Knowledge On Racism And Health: Relevance To Policy And The National Equity Discourse | Health Affairs](https://www.healthaffairs.org/content/41/2/e00000)
- Health Resources and Services Administration (2020). Culture, language, and health literacy. Retrieved on January 14, 2022 from: [Culture, Language, and Health Literacy | Official web site of the U.S. Health Resources & Services Administration \(hrsa.gov\)](https://www.hrsa.gov/culture-language-and-health-literacy/)



Resources

- Launikari, M (2016). Developing sensitivities to diversities. Retrieved on January 12, 2022 from: [Developing sensitivities to diversities \(launikari.eu\)](https://launikari.eu)
- Lee, E (nd). Looking through an anti-racist lens. *Beyond Heros and Holidays*. Retrieved on March 14, 2022 from [LookingthroughanAntiRacistLens.pdf \(austinschools.org\)](https://austinschools.org)
- National Association of Social Workers (2021). Highlighted revisions to the code of ethics. Retrieved on January 17, 2022 from: [Highlighted Revisions to the Code of Ethics \(socialworkers.org\)](https://socialworkers.org)
- Martinez, L. (2019) Health Equity, Social Determinants of Health, and the Role of Social Work. Retrieved on January 28, 2022 from: [Health Equity, Social Determinants, and the Role of Social Work | HealthCity \(bmc.org\)](https://bmc.org)
- National prevention center Black Mamas Matter Alliance & Center for Reproductive Rights. (2016). Research Overview of Maternal Mortality and Morbidity in the United States
- Racial Equity Tools (2020). Racial Equity Tools Glossary. Retrieved on March 14, 2022 from: [Glossary | Racial Equity Tools](https://racialequitytools.org)
- Randall, V. (2008) Institutional Racism in US Healthcare. Retrieved on January 13, 2022 from: [Institutional Racism in US Health Care \(udayton.edu\)](https://udayton.edu)
- Relias (2020) How diversity, equity, and inclusion can influence healthcare. Retrieved on January 12, 2022 from: [How Diversity, Equity, and Inclusion Can Influence Healthcare | Relias](https://relias.org)
- The Common Wealth Fund (2021). *Achieving Racial and Ethnic Equity in U.S. Healthcare*. Retrieved on December 28, 2021 from: [Achieving Racial and Ethnic Equity in U.S. Health Care: Scorecard | Commonwealth Fund](https://commonwealthfund.org)
- The Joint Commission (2011). Requirement, Rational, Reference: Patient-centered communication standards for hospitals. Retrieved from www.jointcommission.org
- U.S. Department of Health and Human Services Office of Disease Prevention and Health Promotion (2020). *Social Determinants of Health*. Retrieved on January 3, 2022 from: [Social Determinants of Health - Healthy People 2030 | health.gov](https://health.gov)
- UCSF Office of Diversity and Outreach (nd). Unconscious Bias. Retrieved on January 3, 2022 from: [Unconscious Bias | diversity.ucsf.edu](https://diversity.ucsf.edu)
- UCSF Office of Diversity and Outreach (nd). Strategies to Address Unconscious Bias. Retrieved on January 10, 2022 from: [Strategies to Address Unconscious Bias | diversity.ucsf.edu](https://diversity.ucsf.edu)
- US Department of Health and Human Services (2021). Office of Minority Health. Retrieved on January 13, 2022 from: ["Infant mortality and African Americans"](https://omh.hhs.gov) .
- University of Michigan (2022). 10-Ways To Be Anti-Racist. *Student Life Multi-ethnic Student Affairs*. Retrieved from: [10 Ways To Be Anti-Racist | Multi-Ethnic Student Affairs \(umich.edu\)](https://umich.edu)



Resources

- University of Southern California Suzanne Dwark-Peck (2022). How to Be an Anti-Racist: A Social Worker's Perspective. Retrieved on March 14, 2022 from: [How to Be Anti-Racist: A Social Worker's Perspective | MSW@USC](#)
- World Health Organization (2022). *Health Equity*. Retrieved on January 3, 2022 from: [Health Equity -- Global \(who.int\)](#)
- World Health Organization (2014). Human Rights Day: #rights365. Retrieved on January 11, 2022 from: [iERG_HRD2014_press_release_10Dec2014.pdf\(who.int\)](#)

