

THE SOCIETY FOR SOCIAL WORK LEADERSHIP IN HEALTH CARE



SSWLHC
Society for Social Work
Leadership in Health Care

The SSWLHC Policy Interests

Did you know the Society has a new **committee for Advocacy & Social Policy**? Please follow us on social media to get action alerts, education, and connections to help you advocate for social work in health care and the patients they serve. Here are some of the policy priorities we are working on:

IN THIS E-NEWSLETTER

SSWLHC Policy Interests -1,3
Professional Education - 2
NEW Pediatric Intensive - 4
Crisis Standards of Care - 5

Name

Improving Access to Mental Health Act (S.870/H.R.2035)

Partnership with NASW

Purpose

- Increase the reimbursement rate from 75% to 85% for clinical social workers;
- Allow independent (i.e., not on staff with SNF) clinical social workers to bill Medicare for services to patients at SNFs;
- Broaden the definition of clinical social work services for Medicare reimbursement to include interventions to prevent, treat, and improve physical health and well-being (in addition to mental health diagnoses).

Action

Ask your representatives to co-sponsor (both congress and senate)

Freedom to Vote Act (S.2747)

- Set commonsense standards for safe, convenient practices like early voting, automatic voter registration and vote-by-mail.
- Adding new safeguards against election subversion, such as partisan efforts to remove local election administrators and harassment of poll workers.
- Ban partisan and racial gerrymandering.
- Reduce the power of special interests in our elections by ending dark money, promoting small donations, and empowering the Federal Election Commission (FEC) to uphold our campaign finance laws.

Ask your senators to support the bill

votingissocialwork.org



See more on policy page 3

PROFESSIONAL EDUCATION

SSWLHC COURSES

1

Cultural Competence in
Health Care Social Work
Practice

Free for
members

2

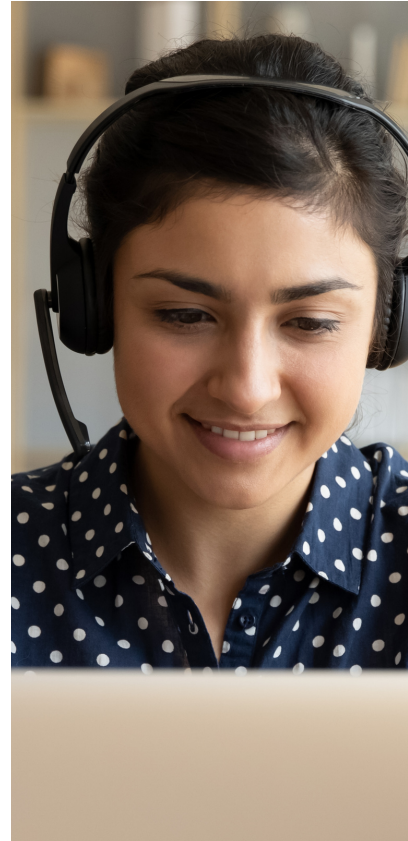
Addressing Suicide in health
Care Settings

On-
Demand

3

Ethics in Healthcare Social
Work Practice

Free for
members



Go to www.sswlhc.org to register

ARTICLES OF INTEREST FOR HEALTH SOCIAL WORKERS

There is so much to read, so many articles of interest. We would like to highlight some here that you may find interesting. Please **share your favorite articles with us** as well!!! Just email info@sswlhc.org with the information.

- Evans, E. J., et al. (2021). "COVID-19 Impacts on Social Work and Nursing Now and into the Future: National Administration Plans." *Health & Social Work* 46(3): 152-157.
- Noone, D., et al. (2019). "Meta-analysis of psychosocial interventions for people with dementia and anxiety or depression." *Aging & Mental Health* 23(10): 1282-1291.
- CareManagement September 2021 on line issue:
https://issuu.com/academyccm/docs/cm_aug_sep_2021



SSWLHC Policy Interests, con't



Name

**Workplace Violence
Prevention for
Health Care and
Social Service
Workers Act
(H.R.1195)**

Purpose

- Direct OSHA to issue a standard rule requiring employers to develop and implement workplace violence prevention plans.
- Employers would need to provide annual training, maintain data about risks and incidents, and conduct hazard assessments.

Action

None at this time.
Being reviewed
by the Senate

Grand Challenges in Social Work

NASW's Policy Priorities

- Individual & Family Well-Being
- Ensure healthy development for youth
- Close the health gap
- Build healthy relationships to end violence
- Advance long and productive lives
- Stronger social fabric
- Eradicate social isolation
- End homelessness
- Create social responses to a changing environment
- Harness technology for social good
- Just society

Sign up for
updates
Join a committee

[grandchallengesf
orsocialwork.org](https://grandchallengesforsocialwork.org)

Eliminate racism

- Promote smart decarceration
- Build financial capability and assets for all
- Reduce extreme economic inequality
- Achieve equal opportunity and justice

**Join a
SSWLHC
Committee!**



NEW!! Pediatric Intensive at the October Conference

PEDIATRIC HEALTH CARE SOCIAL WORK INTENSIVE

Monday October 25, 2021 8:00 AM – 4:00 PM PST

Costs: \$249

CEU's: 5 hours (pending approval)

Following a challenging year, the Pediatric Intensive will focus on topics related to resilience, health equity, Social Determinants of Health, oppressive practices and Century 21 Cures Act Open Notes. The agenda will include a presentation from CHA.



Learning Objectives

Obtain policy updates and other information from Children's Hospital Association that supports our advocacy and quality improvement efforts in the care of children and their families.

Participants will learn about leading in a pandemic and strategies for beyond the crisis. Identify bias and privilege in child protection reports and system changes needed for a trauma informed approach.

Discuss the ethics and efficacy of screening for social needs in pediatrics

Understand the impact of the 21 Century Cures Act on documentation and opportunities to oppressive practices.



To register for the Pediatric Institute and the conference, [click here](https://sswlhc.memberclicks.net/2021-annual-meeting-conference-registration-form):

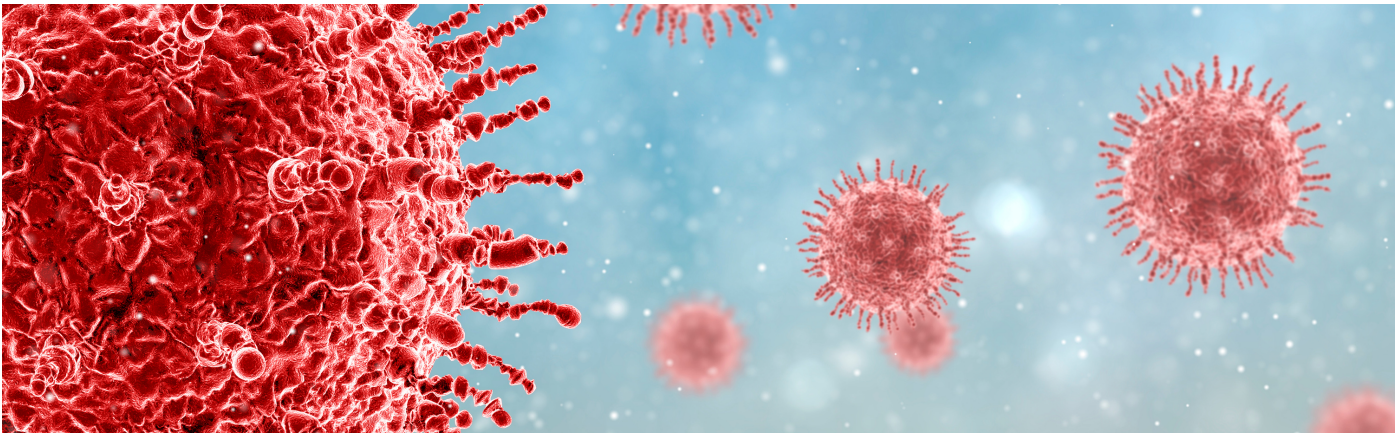
<https://sswlhc.memberclicks.net/2021-annual-meeting-conference-registration-form>

Crisis Standards of Care



Articles about instituting Crisis Standards of Care around the country.

As health social workers, we should be aware of the institution of crisis standards of care in the setting of the Delta variant of Covid. While crisis standards of care have been around for a while, there is some more recent discussion about how race factors into these algorithms.



Here are a few links to recent articles of the subject:

"Idaho allows rationing of medical care statewide amid surge in covid hospitalizations"

- <https://www.washingtonpost.com/nation/2021/09/16/covid-delta-variant-live-updates/>

"Four patients, two dialysis machines: Rationing medical care becomes a reality in hospitals overwhelmed with covid patients."

- <https://www.washingtonpost.com/health/2021/09/17/hospitals-ration-care-covid/>

Acknowledging the Burden of Blackness. by N. O. Sederstrom and J. Wiggleton-Little
HEC Forum 2021 Vol. 33 Issue 1-2 Pages 19-33 DOI: 10.1007/s10730-021-09444-w

- <https://dx.doi.org/10.1007/s10730-021-09444-w>
- https://www.ncbi.nlm.nih.gov/pmc/articles/PMC7934809/pdf/10730_2021_Article_9444.pdf