



SSWLHC
Society for Social Work
Leadership in Health Care

56th Annual Meeting and Conference

**The Call to Courage - Embracing Opportunities
For Social Justice, Resilience and Transformation**

Loews Ventana Canyon Resort, Tucson, Arizona

October 25-28, 2021

Pre-Conference Intensives: October 24-25, 2021



2021 Conference Committee

2021 Conference Chair

Chris McLaughlin
Conference Chair
Associate Vice President
Northern Light Acadia Hospital
Bangor, ME

Conference Champions

Abstract Champion
Virna Little
Concert Health
Moore, SC

Vendor/Sponsor Champions
Carrie Smith
Arkansas Children's Northwest
Springdale, AR

Abigail Bristol
Western Michigan University
Grand Rapids, MI

Volunteer Champion
Krystyna Tan
Kansas University Medical Center
Kansas, MO

Intensive Chairs

Joann Duffy
Pediatric Intensive Chair
Director, Social Work
The Children's Hospital of Pennsylvania
Philadelphia, PA

Lee Lucas
Leadership Institute Chair
Retired
Nemours Alfred I DuPont Hospital for Children
Wilmington, DE

THANK YOU 2021 CONFERENCE SPONSORS!

Nationwide Children's Hospital
Home Instead Senior Care

Palo Verde Behavioral Health
Keep Swimming Foundation

Smith College of Social Work

Conference Learning Objectives

At the conclusion of 56th Annual Meeting & Conference, participants will have

- Learned a range of innovative social work practice concepts, techniques, and skills that can be applied in their organizations.
- Developed leadership skills for all levels of practitioners across the health care continuum in the areas of program development, managing change, conflict management, administration and executive leadership.
- Enhanced their understanding of emerging healthcare trends and their impact on policy and practice.
- Learned and compared "best practices" regarding clinical, managerial skills, and programming.

Table of Contents:

Conference Chairs	2	General Session Panel Presentation	6
Conference Champions	2	Plenary Session Presentation – Kwame Christian	7
Sponsorships	2/12	Closing General Session – Chris McLaughlin	8
Learning Objectives	2	Pre-Conference Intensives	9
Conference Highlights	3	General Information	10
• Volunteer Activity – Ben's Bells		• Continuing Education	
• Conference Orientation and Membership Meeting		• Exhibit Booth Information	
• Hotel Activities		• Activities Included with Registration	
• Leadership Institute Alumni Lunch		• Registration Information	
• Roundtable Dinner Themes		• Substitution/Cancellation Policy and Safety Measures	
• Opening Traditional Tribal Blessing		• Registration/Information Desk	
• Welcome Reception with Exhibitors		• Hotel and Travel Information	
• Virtual Poster Presentations		• Hotel Accommodations	
• Networking Lunch with Exhibitors & Posters		• Reservations	
• Social Work Health Leadership Foundation Auction and Donations		• Air Transportation	
• Award Presentations		• Ground Transportation	
• Conference Closing Session and Adjournment (announcement of winners)		• Airport Ride Sharing	
Keynote Presentations:		• Parking	
Kermit Nash Presentation – SaraKay Smullens	4	• Registration Information	
Keynote/Opening Session – Haner Hernandez	5	• Substitution/Cancellation	
		Registration Form and Waiver	14

Conference Highlights

Schedule-at-a-Glance

The schedule-at-a-glance is presented electronically.
Any changes or updates will be reflected directly on the schedule.
[Click here to view the Schedule-at-a-Glance.](#)

Volunteer Activity - Ben's Bells

Monday, October 25, 2021 12:30 – 2:30 PM PST

Please join us to learn about the positive impacts of intentional kindness and be inspired to practice kindness as a way of life. Ben's Bells are colorful ceramic flowers hung in communities throughout the world as symbols of kindness for people to find and take home. We will be painting these bells and learning more about the organization which was created in 2002 when founder, Jeannette Mare's life changed forever when her son, Ben, died suddenly before his third birthday. We hope you will join us to reconnect with fellow friends through kindness and creativity.



Conference Orientation and Membership Meeting

Monday, October 25, 2021 4:15 – 5:00 PM PST

New to the Conference? SSWLHC invites all members and first-time attendees to kick off the conference by attending this informal session to meet and network with the SSWLHC leadership and first-time attendees on a more personal level. Learn about the Society and how to make the most of your first conference.

Welcome Reception with Exhibitors

Monday, October 25, 2021 5:00 – 5:45 PM PST

Reconnect with old friends or strike up a conversation with a new face in the crowd while enjoying a drink (cash bar) and light hors d'oeuvres. The relaxed, informal, atmosphere will also provide an opportunity to visit with our poster presenters, sponsors, and exhibitors. If you would like to bring a guest, you can purchase a ticket for \$60 which can be paid for during registration or on-site.

Attendees will be given an "Exhibit Hall Passport" in their registration packets. Stop by to chat with our exhibitors to learn about their latest products and services and get entered into a raffle to win a complimentary registration to the 2022 Annual Meeting & Conference.

Hotel Activities

The Loews Ventana Canyon Resort provides the following complimentary activities with your room rate

- On-Demand car service to and from Sabino Canyon every day of the week.
- Stargazing (Tuesday's/8:30 PM PST/Tennis Courts)
- Guided Hikes (Friday and Saturday)

For information on these activities, please contact the bell desk in the lobby of the hotel.

Leadership Institute Alumni Lunch

Tuesday, October 26, 2021 12:15 – 1:15 PM PST

Attention Leadership Institute Alumni! You are cordially invited to participate in a reunion luncheon during National Conference. Alumni will have the opportunity to network, share best practices and address specific topics related to leadership as it relates to their everyday activities. Please note: this is limited to Leadership Institute Alumni. If you are interested in attending, please contact [SSWLHC](#).

Roundtable Dinner Themes

Attendees will have the ability on Tuesday and Wednesday evening to

share dinner with other attendees interested in a particular topic or theme. Registration for the theme dinners can be made at the SSWLHC Conference registration desk. Please note: attendees are responsible to cover the costs of their meals.

Virtual Poster Presentations

This year SSWLHC is offering virtual poster presentations. Attendees will have the ability to view accepted posters and cast their votes for the best posters on the SSWLHC website.

Certificates will be awarded for posters which promote social work excellence in clinical expertise, leadership, and working with specific populations. Winners will be announced at the Closing Raffle in the Exhibit Hall.

Networking Lunch with Exhibitors

Tuesday October 26, 2021 12:15 – 1:15 PM PST

Grab a light lunch and take this opportunity to unwind a bit as well as meet new colleagues and share concerns, ideas, and potential solutions or lessons learned. It also gives you a chance to meet people and possibly connect to make plans for sightseeing or dinner to continue your discussions. We also want to make sure that you get your Exhibit Hall passport out and signed by the exhibitors to be eligible to win a complimentary registration to our next Annual Conference. The lunch is included in your registration fee.

Social Work Health Leadership Foundation

The Social Work Health Leadership Foundation (SWHLF) was established in 2005 by members of the Society for Social Work Leadership in Health Care to support the advancement of social work leadership in health care and eventually fund research in the field. The Foundation's goal is to have sufficient assets help raise funds to support the ongoing efforts of SSWLHC.

Auction:

SWHLF will be offering a virtual silent auction this year to raise funds for SWHLF. Auction items will include, but are not limited to vacation homes, gift cards, hotel nights, vacation resort tickets, handmade jewelry, art work, DVD series, food, and wine. If you would like to make a donation to the auction, click [here](#). We appreciate each and every donation! If you are interested in making a donation to the auction, please click [here](#).

Donations

Every Society member is a direct beneficiary of the activities of the Foundation which provides educational scholarships, financial support to specialized programs like the Leadership Institute, and the awarding of grants to the Society. To make a donation, click [here](#). All donations are tax-deductible.

Presentation of Awards

Various times throughout the conference

Please check your 'Schedule at a Glance' for additional information

Conference Closing Session and Adjournment (Announcement of Poster Winners)

Wednesday, October 27, 2021 2:15 – 3:15 PM PST

Please join us for drinks and snacks for the announcement of the virtual poster winners and winner of the 2022 free conference registration. Please note: in order to win a free conference registration you must submit a completed exhibit booth passport to the SSWLHC registration desk by 1:00 PM PST on October 27.

Kermit B. Nash Lecture



Bewitched, Bothered, Bewildered, and Exhausted: Knocking Burnout Into Oblivion

Presented by SaraKay Smullens, LCSW, ACSW, BCD, DCSW, CGP, CFLE

Monday October 25, 2021 5:45 – 7:15 PM PST

Presentation Description:

Motivated by the high percentage of social workers leaving the field, and the overwhelming dissatisfaction shared with her, described by colleagues as “burnout,” SaraKay began over five years of research into the complexity of the burnout syndrome, its causation, and the arenas where it manifests and dangerously interacts in each of our lives. This culminated in her 2015 best-selling book, *Burnout and Self-Care In Social Work* (NASW Press). Following this publication, the societal despair she saw mounting motivated new research and a second edition of this book. All findings will be shared in her address: Concentration will be on personal, professional, relational, physical, and societal arenas of burnout, their origins, and their interaction; the differences between burnout and depression, the psycho-social causes of burnout (its attendant syndromes); and the impact of dysfunctional leadership in each burnout arena. Evidence based self-care strategies for each arena will be noted. The surreal, terrifying impact of 2020-2021 pandemic in our lives and its ongoing impact will be highlighted.

Learning objectives:

- Identify the five arenas in our lives where burnout exists and interacts: personal, professional, relational, societal and physical
- Explain the differences between burnout and depression
- Identify the attendant syndromes, or causation, of burnout from a social work perspective
- Identify self-care strategies to address burnout in each of these arenas

About SaraKay Smullens:

SaraKay Smullens, LCSW, ACSW, BCD, DCSW, CGP, CFLE, whose private and pro bono clinical social work practice is in Philadelphia, is a certified group psychotherapist and family life educator. In addition to her clinical emphasis, a long-standing professional priority has been to bring social work awareness and committed mental health insights to the public at large, and through this process join those devoted to addressing and alleviating divisiveness and rage in families, work settings, and society through education, advocacy, and activism.

SaraKay’s activist roots began in her hometown, Baltimore, where as a child she witnessed the evils and degradation of the Jim Crow laws. While in undergraduate school at Goucher College, then a women’s college located in Baltimore, she successfully led a two-year campus coalition to end segregation in Towson, Maryland, the Baltimore suburb where Goucher College is located. A graduation award for this initiative led to an introduction to John F. Kennedy at the Democratic Convention in 1960, and subsequent employment at the Democratic National Committee, where she became a regional coordinator for young Democrats. It was President Kennedy who recommended social work to her as a profession.

SaraKay’s articles and commentaries have appeared in peer-reviewed journals, newspapers, magazines, and blogs. Her articles about domestic abuse contributed to the reform of brutal, archaic Pennsylvania divorce laws. Her investigation of invisible patterns of emotional abuse, always part of physical and sexual violence, led to their independent codification. It also led to the founding of the Sabbath of Domestic Peace, an initiative focused on the involvement of Philadelphia clergy, identified as “a missing link” in addressing the epidemic of domestic abuse and violence.

SaraKay’s professional papers and memorabilia are divided between the Archives of the University of Pennsylvania, Goucher College, and the John F. Kennedy Presidential Library. A recipient of numerous awards and a bestselling author, in 2019 SaraKay was one of five graduates of the University of Pennsylvania School of Social Policy and Practice inducted into its Inaugural Hall of Fame.

Please note that SaraKay Smullens will be offering a book sale and signing immediately following the Kermit Nash Lecture. The book signing will take place immediately outside the lecture hall.

Keynote/Opening Session



Understanding Disparities and Building Health Equity: A Social Justice Framework and Approach

*Presented by Haner Hernández, PhD, CPS, CADCI, LADC
Tuesday October 26, 2021 8:15 – 9:15 AM PST*

Presentation Description

This keynote presentation will highlight the development of disparities in the US and their impacts on marginalized communities. Participants will learn about approaches grounded in strength-based approaches, cultural humility and cultural intelligence. Utilizing a social justice framework, Dr. Hernandez will describe strategies and techniques that are anti-racist, build health equity and create true partnerships with communities.

Learning Objectives:

By the end of the presentation, audience members should be able to:

- Describe the impacts of disparities on marginalized communities and beyond;
- Define health disparities and health equity;
- Understand and describe the concepts of cultural humility and cultural intelligence; and
- Name at least 3 strategies for engagement, retention, improving outcomes

About Haner Hernandez:

Dr. Hernández is originally from Puerto Rico, is bilingual and has worked for over 33 years in the health and human service field developing, implementing, and evaluating culturally and linguistically intelligent youth and adult health prevention, intervention, treatment, and recovery support programs. He is a master trainer and facilitator and provides individualized technical assistance and support to organizations that provide Substance Use Disorder and gambling prevention, intervention, treatment and recovery supports. Also, Dr. Hernández has over 30 years of experience in delivering mental health services, addiction counseling and clinical supervision to professionals in the field. Haner is a person in long-term recovery from addiction and is committed to eliminating health disparities by participating in processes the build equity. He has served as a consultant to a number of local and state health departments with a focus on disparities, building health equity, addiction treatment, and recovery supports. He also consults with and teaches a number of courses at the New England Addiction Technology Transfer Center at Brown University and the National Latino and Hispanic Prevention, Treatment, and Mental Health Addiction Technology Transfer Centers funded by SAMHSA. Currently he serves on the steering committee of the national Peer Recovery Center of Excellence. Additionally, he has served a consultant to several federally-funded initiatives in the areas of behavioral workforce development, HIV/AIDS, Substance Use Disorders prevention and treatment, military service members, their families and TBI and PTSD, and pediatric asthma. Dr. Hernández serves as faculty at the New England School of Addiction Studies since 1998 and the School of Best Practices for over 10 years. Dr. Hernandez has presented at several state, national and international conferences. And, he serves as President of the Board of Directors of the Massachusetts Board for Voluntary Certification of Drug and Alcohol Counselors.

General Session Panel Presentation

Making the (Business) Case for Health Social Work

Presented by: Virna Little, Teresa Moro, Shirley Otis-Green, Walter Rosenberg and June Simmons

Tuesday, October 26, 2021 1:30 – 3:00 PM PST

Presentation Description

As healthcare in the U.S. continues to be in flux, the need for social workers in the health setting to be readily able to articulate our field's value is of increasing importance. The global pandemic and ongoing socio-political upheavals have highlighted the importance of this work and its vulnerability. This session brings together a panel of social work leaders to explore the challenges facing our field, highlight the evidence base that supports our influence and offer strategies that participants might adapt when tasked with "justifying" their work.

Learning Objectives

Following completion of this panel presentation, participants will be able to:

- Describe the challenges facing social work as healthcare is reimagined.
- Summarize the evidence base that supports the value of social work in health settings.
- Identify advocacy and leadership opportunities in the transformation of US healthcare.
- Articulate the value of their work for use in their own settings



Moderator:

Shirley Otis-Green, MSW, MA, ACSW, LCSW, OSW-C, FNAP, FAOSW

Shirley's career is dedicated to enhancing excellence in the delivery of contextualized care to address the symptoms and stress of serious illness. Her education, research and consultation efforts focus on quality-of-life, palliative care, and transformational leadership. As Principal Investigator on studies with over \$3.5 million in external funding, her work has been disseminated through more than 100 publications and 500 professional presentations.



Panelists:

Virna Little, PsyD, LCSW-r, SAP, CCM

Virna Little, PsyD, LCSW-r, SAP, CCM is an internationally recognized consultant and speaker for her work integrating primary care and behavioral health, developing sustainable integrated delivery systems and suicide prevention. Dr. Little is also the Chief Operating Officer and Co-founder of Concert Health, a national organization providing behavioral health services to primary care providers.



Teresa T. Moro, PhD, AM, LSW

Dr. Teresa Moro is an Assistant Professor in the Department of Social Work within the College of Health Sciences at Rush University. Dr. Moro is also a Program Coordinator at the Rush Center for Health and Social Care Integration (CHaSCI) and a Translational Research Coordinator managing two federally funded clinical trials in the Rush College of Nursing. Dr. Moro has both her master's and doctoral degrees in social work with a concentration in health services.



Walter Rosenberg, MSW, MHSM, LCSW

Walter Rosenberg is the Director of Social Work and Community Health at Rush University Medical Center. In this role he oversees social work care management, health promotion, disease prevention, and mental health operations, and leads financial and strategic planning. In addition, Walter is the Head of Operations of the Bridge Model National Office (BMNO), where he directs its model development and quality improvement efforts, and is the lead trainer for its Bridge Model of transitional care. He is the president of the Chicago District of the Society for Social Work Leadership in Health Care and serves on the advisory board of the Dominican University Graduate School of Social Work. He is a 2017 Hartford Practice Change Leader. He received his MSW and BA from the University of Illinois at Chicago and MHSM from Rush University.



W. June Simmons, BA, MSW

June Simmons, President and CEO of Partners in Care Foundation, has pioneered the development and scaling of evidence-based innovative interventions for the management of medications at home, self-management of chronic conditions, coordinated care to improve health outcomes, and care transitions.

Throughout her distinguished career, she has been instrumental in envisioning, creating, funding, and operating forward-looking health and social service programs that meet the mutual needs of patient populations, health care delivery networks and health plans. Her priority is sustainable patient-driven integration of care across settings, from primary care and hospital to home and community in the 21st century.

Plenary Session Presentation



Getting Comfortable With Discomfort

Presented by Kwame Christian, Esq., M.A.

Wednesday, October 27, 2021 8:00 – 9:30 AM PST

Presentation Description

This program is designed to make difficult conversations easier and give you the confidence you need to overcome the fear, frustration, and anxiety that prevent us from engaging in constructive dialogue on difficult topics

Learning Objectives

- How to have critical conversations.
 - How to create trust and understanding.
 - How to use critical conversations to understand others and create an atmosphere that facilitates honest conversation.
 - How to avoid critical mistakes that stifle communication and create hostility.
-

About Kwame Christian:

A best - selling author, coach and speaker, Kwame Christian is the Director of the American Negotiation Institute and a thought leader in the field of negotiation and conflict resolution. He has conducted countless specialized trainings throughout North America and abroad, and is a highly sought after national keynote speaker.

Host of the number one negotiation podcast in the world, Negotiate Anything, Kwame is dedicated to empowering others through the art and science of negotiation and persuasion. With nearly four million downloads, Negotiate Anything now has listeners in more than 180 countries.

Kwame's TEDx Dayton talk, Finding Confidence in Conflict, was ranked the most popular TEDx Talk on the topic of conflict in 2017, and his best - selling book, Finding Confidence in Conflict: How to Negotiate Anything and Live Your Best Life has helped countless individuals overcome the fear, anxiety and emotion associated with difficult conversations using a branded Compassionate Curiosity™ framework.

In addition, Kwame is a business lawyer at Carlile, Patchen & Murphy LLP and serves as an adjunct professor for Otterbein University's MBA program, as well as The Ohio State University's Moritz College of Law in its top - ranked dispute resolution program.

Please note that Kwame Christian will be offering a book sale and signing immediately following the Plenary Session Presentation. The book signing will take place immediately outside the lecture hall.

Closing General Session



Caring for LGBTQ+ Individuals in Health Care

Presented by Chris McLaughlin, MSW, LCSW

Wednesday, October 27, 2021 4:30 – 6:00 PM PST

Presentation Description

A combined 101 and 201 training for social workers and medical professionals looking to better support LGBTQ+ individuals accessing health care services. This training will provide an overview of terms and concepts and will focus on how to combat health care disparities for this population by increasing competencies for staff in the areas of trans-affirming practices and LGBTQ+ representation.

Learning Objectives

- To bring awareness of the risk factors associated with LGBTQ+ individuals
 - To educate health care professionals on basic terms and definitions associated with LGBTQ+ individuals
 - To prepare health care professionals to respond to LGBTQ+ patients with empathy and compassion and be best prepared to meet their identified health care needs
-

About Chris McLaughlin:

Chris McLaughlin, MSW, LCSW is the Associate Vice President of Community and Pediatric Services at Northern Light Acadia Hospital in Bangor, Maine. A lifelong resident of Maine, he obtained both his BA in Psychology (1996) and his MSW (2001) from the University of Maine in Orono. Chris has spent the last 20 years providing behavioral health services to youth and families across a variety of clinical settings including treatment foster care, residential treatment facilities, public schools, private practice, and community-based case management programs. Chris is an adjunct faculty member at both the University of Maine in Orono and Husson University in Bangor and is the owner of Inspired Consulting Group, LLC. He serves on the Maine Board of Social Work Licensing and is a member of both the NASW and the Society for Social Work Leadership in Health Care (SSWLHC), where he is the current Maine Chapter President and National Conference Planning Committee Chair. He is a graduate of the Disney Institute leadership program and the Daniel Hanley Health Leadership Development (HLD) program. Locally, Chris was recognized in 2019 for his advocacy work with LGBTQ+ youth and was named Health Care Social Worker of the Year in 2019 by the Maine Hospital Association and the Maine Chapter of the SSWLHC. Nationally, he was the SSWLHC's 2019 recipient of the Eleanor Clark Award for Innovative Programs in Patient Care for his work on youth suicide prevention. In the Spring of 2020, Chris was named the University of Maine School of Social Work's Alumni of the Year. Chris and his husband live in Hermon, Maine with their three dogs, Huck, Anna, and Becky.

Pre-Conference Intensives

PEDIATRIC HEATH CARE SOCIAL WORK INTENSIVE

Monday October 25, 2021 8:00 AM – 4:00 PM PST

Costs: \$249

CEU's: 5 hours (pending approval)

Following a challenging year, the Pediatric Intensive will focus on topics related to resilience, health equity, Social Determinants of Health, oppressive practices and Century 21 Cures Act Open Notes. The agenda will include a presentation from CHA.

Learning Objectives

- Obtain policy updates and other information from Children's Hospital Association that supports our advocacy and quality improvement efforts in the care of children and their families.
- Participants will learn about leading in a pandemic and strategies for beyond the crisis.
- Identify bias and privilege in child protection reports and system changes needed for a trauma informed approach.
- Discuss the ethics and efficacy of screening for social needs in pediatrics
- Understand the impact of the 21 Century Cures Act on documentation and opportunities to oppressive practices.

PEDIATRIC HEATH CARE SOCIAL WORK INTENSIVE

SSWLHC will be rescheduling the Leadership Institute from the planned in-person format during the 2021 Conference to a virtual format in coming months. Please continue to check the website for additional information.

General Information

Continuing Education

SSWLHC will apply for Continuing Education Units from the National Association of Social Work, the Michigan Social Worker Continuing Education Collaborative, the Commission for Case Manager Certification (CCMC), and the New York State Board for Social Work. SSWLHC will apply for continuing education contact hours as follows:

Preconference Intensives:

- Leadership Institute: 11.5 hours
- Pediatric Intensive: 5 hours

Main Conference (Starting with the Opening Session on Monday afternoon through adjournment on Wednesday): To be determined

Continuing education certificates will be issued via email approximately four to six weeks after the conference. Only those attendees who return an Attendance Monitoring Form and complete the electronic meeting evaluation are eligible to earn continuing education. Additional instructions will be provided to registered attendees prior to and onsite at the conference. This program is not approved by the state of New Jersey for Social Work continuing education contact hours. Contact SSWLHC Headquarters at info@sswlhc.org for approval status or additional information.

*** Disclaimer: CEU' are currently pending approval. Requirements for state licensing boards vary and it is the responsibility of each social worker to check with their state board(s) regarding the specific continuing requirements for licensure renewal.*

Satisfactory Completion

Learners must complete an evaluation form to receive a certificate of completion. Your chosen sessions must be attended in their entirety. Partial credit of individual sessions is not available. Requirements for state licensing boards vary and it is the responsibility of each social worker to check with their state board(s) regarding the specific continuing requirements for licensure renewal.

Exhibits

We invite you to view and experience the latest products and services exclusively suited for the buying needs of social workers. A vendor raffle will be held at the close of the exhibit hall on Wednesday, October 27. The prize is a free registration to the 57th Annual Meeting & Conference. In order to participate, registrants will be given an Exhibit Hall Passport. The form must be signed by participating exhibitors as you visit their booths. You must be present to win.

Exhibit Hall Hours

Monday, October 25, 2021

8:00 AM - 2:00 PM PST	Exhibitor Set Up
5:00 PM – 5:45 PM PST	Opening Reception

Tuesday, October 26, 2021

9:45 AM – 10:00 AM PST	Transition Break
11:00 AM – 11:15 AM PST	Transition Break
12:15 PM – 1:15 PM PST	Networking Lunch with Exhibitors

Wednesday October 27, 2021

9:45 AM – 10:00 AM PST	Transition Break
11:00 AM – 11:15 AM PST	Transition Break
2:15 PM – 3:15 PM PST	Refreshment break with Exhibitors and Closing Raffle

General Information

Activities and Pricing

What is included in the conference fee?

- Access to all presentations during the live conference (**This does not include pre-conference intensives)
- Admittance to Exhibit Hall
- CE's: Attendees can earn continuing education credits starting with the opening session on Monday October 25 and continuing through the conference adjournment.
- Access to password protected website where handouts from concurrent sessions will be available for downloading prior to the conference

Registration Information

- [Online registration](#) with a credit card is strongly encouraged. Visa, MasterCard and American Express are accepted.
- Check payments can be mailed to: SSWLHC, 295 P.O Box 175 Devault PA 19432. All payments must be made in US Dollars. **A \$5.00 check processing fee will apply for all check payments or the processing of any hard copy registration form.**
- The **Tax Identification Number** for the Society for Social Work Leadership in Health Care is 23-3100897. The **DUNS number** is 962585829.
- Faxed registrations are not accepted. Registrations by phone are not accepted.

Questions Regarding Registration

For questions regarding the program or registration, please contact SSWLHC Headquarters by toll-free phone at 844-957-7768 or e-mail at info@sswlhc.org.

Substitution/Cancellation Policy

Pre-Conference Cancellation:

We all have unforeseen emergencies that may occur. In order to accommodate these possibilities, we will accept notification of cancellations up to 7 business days prior to the start conference (by the close of business on *Monday, October 18, 2021*). Cancellations must be sent in writing via email to SSWLHC Headquarters at info@sswlhc.org. Refunds will be issued less a \$75 processing fee. You may send a substitute at any time. If the alternate is not a member, the non-member fee will be required.

Onsite Participation:

Participants at the 2021 Conference agree to comply with all safety measures required by Loews Hotels, the State of Arizona, and the CDC, as they exist at the time of the Conference. Failure to comply with those safety measures may cause SSWLHC to remove participants from the Conference, without refund.

Registration/Information Desk

Please pick up all badges at the SSWLHC Registration Desk located at the Loews Ventana Canyon Resort. Registration hours are as follows:

- Monday October 25, 2021 1:00 – 5:00 PM PST
- Tuesday, October 26, 2021 7:00 AM – 4:00 PM PST
- Wednesday, October 27, 2021 7:00 AM – 4:00 PM PST
- Thursday, October 28, 2021 7:00 – 11:00 AM PST

General Information

HOTEL & TRAVEL INFORMATION

Hotel Accommodations

A breathtaking desert sanctuary located in a lush 100-acre desert garden at the foothills of the magnificent Santa Catalina Mountains, Loews Ventana Canyon Resort captures the spirit, beauty and culture of the Southwest's Sonoran Desert. Newly renovated guestrooms offer private terraces, breathtaking views of the area, and every creature comfort.

Address: 7000 N. Resort Drive, Tucson, Arizona, 85750

Guest Room Rates: starting from \$215 plus tax

Group Rates Available: October 19, 2021 through October 31, 2021

Room Block Release Date: October 1, 2021

Group Details: The Resort Amenities charge has been waived for registered group guests.

Hotel cancellation policy requires guests to cancel by 4 pm local time 72 hours before arrival to avoid a penalty fee of 1 nights' room and tax.

The discounted room rate will be honored through October 1st or until the block of rooms has sold out, whichever comes first. Please be sure to secure your reservations as early as possible to guarantee rate availability.

Reservations:

You can make your reservation in two ways:

- Book online at Loews Ventana Canyon Resort site by clicking [here](#)
- Call The Loews Ventana Reservations line at 800-234-5117. Please refer to the Society for Social Work Leadership in Health Care at The Loews Ventana Canyon Resort on 10/25/21.

Air Transportation

The Loews Ventana Canyon resort is located approximately 19 miles or 39 minutes from Tucson International Airport.

Ground Transportation

Please visit the Airport's website to get additional information on Tucson International ground transportation:

<https://www.flytucson.com/transportation/>

Please visit the hotel website for driving directions: <https://www.loewshotels.com/ventana-canyon>

Airport Ride Sharing

If you are interested in sharing a ride with other attendees, please click [here](#) to enter your name, contact and arrival/departure information. Attendees are responsible for reaching out and organizing any ride-shares with other attendees. If you do find someone to rideshare with, please delete your name and contact information from the spreadsheet.

Parking

SSWLHC has secured a reduced valet parking fee of \$15. Self-parking is complementary.

2021 Annual Meeting & Conference Registration Form

Please fill out and return a hard copy of this form **AND WAIVER** only if you are paying by check. Please register only one person per form. This form may be duplicated or you may obtain additional forms at www.sswlh.org. Faxed registrations are not accepted. Online registration with a credit card is strongly encouraged. A \$5.00 check processing fee will apply to all check payments. Registrations will not be processed without payment.

FIRST NAME / LAST NAME

TITLE

INSTITUTIONAL AFFILIATION

ADDRESS

ADDRESS

CITY

STATE

ZIP

PHONE

FAX

EMAIL

GUEST NAME BADGE (WELCOME RECEPTION)

☐ **Vegetarian Meal Requested**

☐ **First Time Attendee**

(Please check here if this is your first SSWLHC Annual Conference. Includes free membership for one year, select member type below.)

☐ Regular

☐ Student

☐ Unemployed/Retired

☐ Associate

Emeritus

☐ **Special Assistance Required**

(A SSWLHC staff member will contact you.)

Join and Register! Become a SSWLHC member today and register for the 2021 Meeting & Conference at the member price. Complete an online member application at <http://sswlhc.org/join/become-a-member/> to take advantage of the member discount.

Registration Fee Schedule - All Fees Payable in U.S. Dollars

CATEGORY	POSTMARKED BY AUGUST 14, 2021	POSTMARKED AFTER AUGUST 14, 2021
Member	<input type="checkbox"/> \$585	<input type="checkbox"/> \$705
Non-Member	<input type="checkbox"/> \$695	<input type="checkbox"/> \$825
Includes SSWLHC Membership through June 30, 2022		
Unemployed/Retired	<input type="checkbox"/> \$330	<input type="checkbox"/> \$380
Student Rate* (Full-time students only)	<input type="checkbox"/> \$330	<input type="checkbox"/> \$380
*Student discounts are available. Please call SSWLHC headquarters for details.		
**Students must submit a copy of their student ID with payment.		

Registration Fee

\$ _____

Optional Pre-Conference Intensive

☐ I-2: Pediatric Health Care Social Work Intensive (Mon 10/25, \$249)

Pre-conference Intensive

\$ _____

Optional Day of Service Opportunities Monday, October 25, 2021

☐ Check here to register for the Volunteer Activity - Ben's Bells **See page 3 for details

Guest (Included in your fee. Additional attendees only.) ☐ Welcome Dinner at \$60 each

\$ _____

Membership Renewal (Expiration 6/30/21)

☐ Regular at \$150 each

☐ Unemployed/Retired Emeritus at \$85

☐ Student at \$60

☐ Associate at \$200 each

Subtotal

\$ _____

Check processing fee

+ \$5.00

Total Amount Due

\$ _____

Payment Information

☐ Check or Money Order Enclosed

(All checks must be made payable to SSWLHC and in U.S. Dollars)

Tax ID # 23-3100897 DUNS# 962585829

Check Number: _____ Amount of Check: \$ _____

Contact Information

Toll Free Phone: (844) 957-7768 Email: info@sswlhc.org

Return this form with a check to:

SSWLHC, P.O. Box 175 Devault, PA 19432

SSWLHC COVID-19 Safety Acknowledgment Release, Waiver, and Assumption of Risk

COVID-19 SAFETY INFORMATION:

While participating in person at events held or sponsored by the Society for Social Work Leadership in Health Care ("SSWLHC"), including the 2021 Annual Conference ("the Activity"), "social distancing" must be practiced and face coverings worn at all times to reduce the risks of exposure to COVID-19. Because COVID-19 is contagious and is spread mainly from person-to-person contact, SSWLHC has put in place preventative measures to reduce the spread of COVID-19. However, SSWLHC cannot guarantee that its participants, volunteers, partners, or others in attendance at any SSWLHC events will not become infected with COVID-19. In light of the ongoing spread of COVID-19, individuals who fall within any of the categories below should not engage in SSWLHC events and/or other face to face fundraising activities. By attending an SSWLHC event, you certify that you do not fall into any of the following categories:

1. Individuals who currently or within the past fourteen (14) days have experienced any symptoms associated with COVID-19, which include fever, cough, and shortness of breath among [others - https://www.cdc.gov/coronavirus/2019-ncov/symptoms-testing/symptoms.html](https://www.cdc.gov/coronavirus/2019-ncov/symptoms-testing/symptoms.html); or
2. Individuals who believe that they may have been exposed to a confirmed or suspected case of COVID-19 or have been diagnosed with COVID-19 and are not yet cleared as non-contagious by state or local public health authorities or the health care team responsible for their treatment.

COMPLETED COVID-19 VACCINE SERIES OR RECENT NEGATIVE PCR OR ANTIGEN TEST:

Upon arrival at the Conference site, each individual must show proof of either a completed COVID-19 vaccine series OR a negative PCR or antigen test for COVID-19 conducted no earlier than three days before the Conference begins. If you fail to provide required documentation you will not be permitted to attend any conference sessions or events. A refund will not be issued if this occurs.

RELEASE AND WAIVER:

I hereby release, waive, and forever discharge any and all liability, claims, and demands of whatever kind or nature against SSWLHC and its affiliated partners and sponsors, including in each case, without limitation, their directors, officers, employees, volunteers, and agents (the "released parties"), either in law or in equity, to the fullest extent permissible by law, including but not limited to damages or losses caused by the negligence, fault or conduct of any kind on the part of the released parties, including but not limited to death, bodily injury, illness, economic loss or out of pocket expenses, or loss or damage to property, which I, my heirs, assignees, next of kin and/or legally appointed or designated representatives, may have or which may hereinafter accrue on my behalf, which arise or may hereafter arise from my participation with the activity, including in person events such as the 2021 SSWLHC Conference.

ASSUMPTION OF THE RISK:

With my registration for the 2021 SSWLHC Conference, I acknowledge and understand the following:

1. Participation includes possible exposure to and illness from infectious diseases including but not limited to COVID-19. While particular rules and personal discipline may reduce this risk, the risk of serious illness and death does exist;
2. I knowingly and freely assume all such risks related to illness and infectious diseases, such as COVID-19, even if arising from the negligence or fault of the Released Parties; and
3. I hereby knowingly assume the risk of injury, harm and loss associated with the Activity, including any injury, harm and loss caused by the negligence, fault or conduct of any kind on the part of the Released Parties.

As a participant, volunteer, or attendee, I recognize that my participation, involvement and/or attendance at any Society for Social Work Leadership in Health Care event or activity ("Activity") is voluntary and may result in personal injury (including death) and/or property damage. By attending, observing, or participating in the Activity, I acknowledge and assume all risks and dangers associated with participation and/or attendance at the Activity, and I agree that:

(a) the Society for Social Work Leadership in Health Care (b) the property or site owner of the Activity, and (c) all past, present and future affiliates, successors, assigns, employees, volunteers, vendors, partners, directors, and officers, of such entities (subsections (a) through (c), collectively, the "Released Parties"), will not be responsible for any personal injury (including death), property damage, or other loss suffered as a result of your participation in, attendance at, and/or observation of the Activity, regardless if any such injuries or losses are caused by the negligence of any of the Released Parties (collectively, the "Released Claims"). Participants at the 2021 Conference agree to comply with all safety measures required by Loews Hotels, the State of Arizona, and the CDC, as they exist at the time of the Conference. Failure to comply with those safety measures may cause SSWLHC to remove participants from the Conference, without refund.

Link to Loews Safety Measures: https://cdn.loewshotels.com/loewshotels.com-2466770763/cms/pressroom/a_032921_loews_hotels_safety_protocols.pdf

Link to Arizona Tourism/CDC:

<https://tourism.az.gov/covid-19-updates-2/>
<https://directorsblog.health.azdhs.gov/>

☐ BY CHECKING THIS BOX, I AM ACKNOWLEDGING THAT I HAVE READ THE ABOVE SAFETY ACKNOWLEDGEMENT, RELEASE, WAIVER, AND ASSUMPTION OF RISK. I ACKNOWLEDGE AND UNDERSTAND THAT THIS AGREEMENT AFFECTS MY LEGAL RIGHTS.

Participant Initials

Participant Name Printed

Date



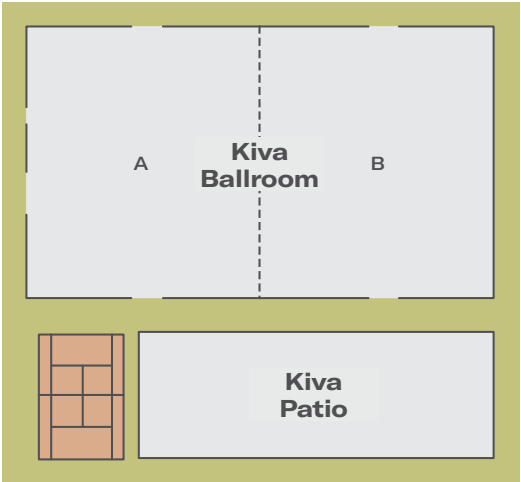
TUCSON

Map Key

- 1 Bell Stand
- 2 Business Center
- 3 Main Entrance
- 4 Resort Shop
- 5 Logo Shop
- 6 Sundry Shop
- 7 Children's Playground
- 8 Golf Shop
- 9 Lake Spa and Fitness Center
- 10 Boarding Pass Printing
- Stairs
- Elevators
- Ice/Soda Machine

*Preceding room numbers refers the floor on the room is located. All room numbers are four digit numbers.

Meeting Space



Gold Sponsor:



**NATIONWIDE
CHILDREN'S®**

When your child needs a hospital, everything matters.

Nationwide Children's Hospital

Silver Sponsor:



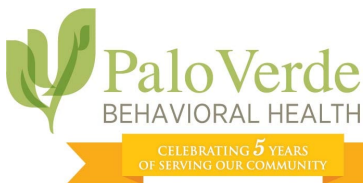
American Negotiation Institute

Bronze Sponsors:



CANCERcare®

Cancer Care



**Palo Verde Behavioral
Health**



**Smith College of Social
Work**

Special Sponsors:



Home Instead Senior Care Keep Swimming Foundation



Don't forget to get your passport stamped by exhibitors in the exhibit hall for a chance to win a complimentary registration to our next Annual Conference.

56th Annual Meeting and Conference Exhibitor Schedule:

Monday, October 25, 2021

8:00 AM - 2:00 PM PST Exhibitor Set Up 5:00 PM – 5:45 PM PST Opening Reception

Tuesday, October 26, 2021

9:45 AM – 10:00 AM PST Transition Break

11:00 AM – 11:15 AM PST Transition Break

12:15 PM – 1:15 PM PST Networking Lunch with Exhibitors

Wednesday October 27, 2021

9:45 AM – 10:00 AM PST Transition Break

11:00 AM – 11:15 AM PST Transition Break

2:15 PM – 3:15 PM PST Refreshment break with Exhibitors and Closing Raffle

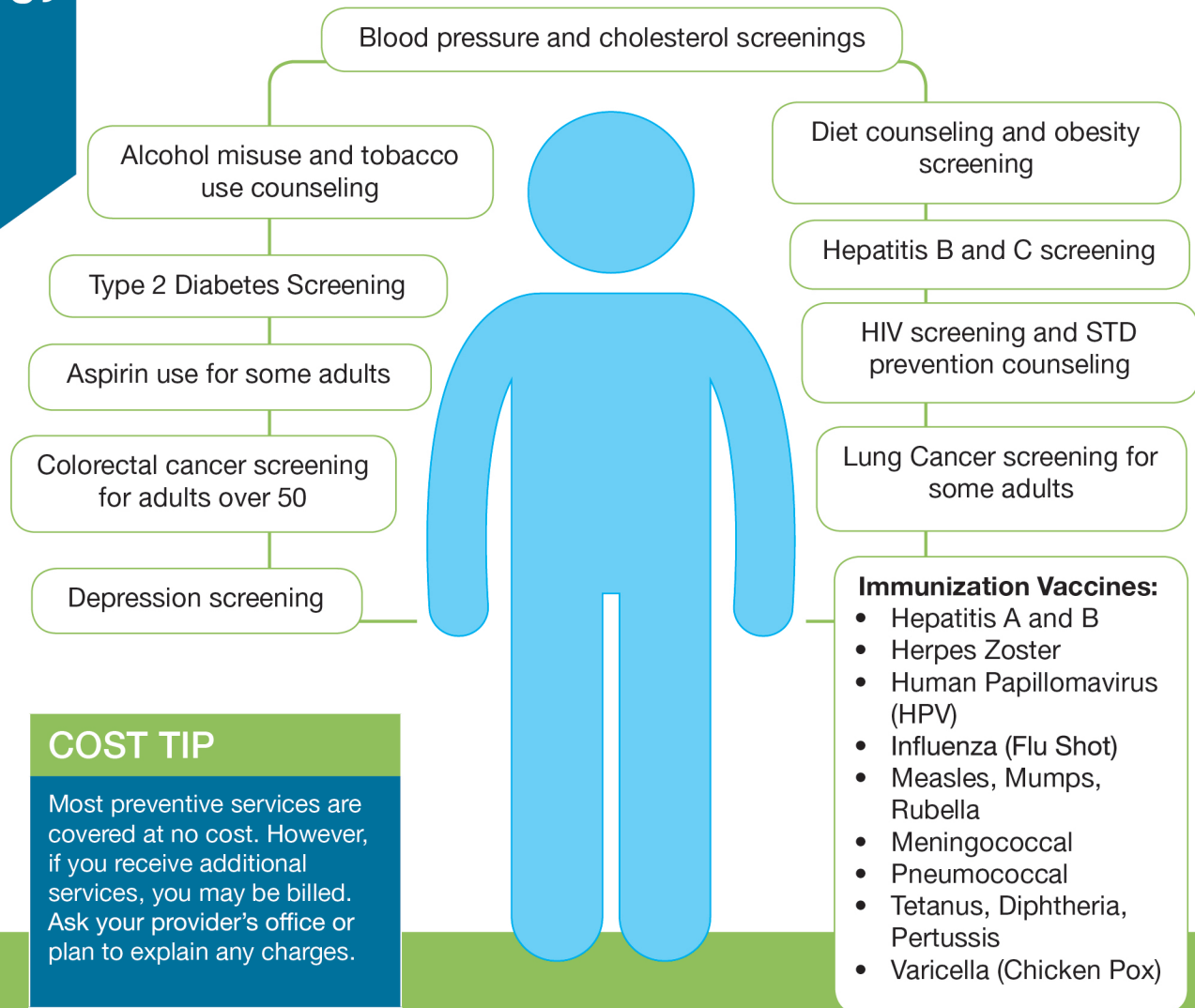
COVERAGE TO CARE >>> Prevention

ADULTS

Put Your Health First

Get the preventive services that are right for you!

Take advantage of these and other services available at no cost to adults under most health coverage.



COST TIP

Most preventive services are covered at no cost. However, if you receive additional services, you may be billed. Ask your provider's office or plan to explain any charges.



For additional resources and a full list of the preventive services covered at no cost sharing under most health plans, please visit go.cms.gov/c2c.

CMS Product No. 11943
September 2017

Excellence in social work.

Making the Change We Wish For — Together

Reducing health care inequities and addressing barriers to health are some of the most important challenges we face. Social Workers serve in innovative roles to bring person-centered and equitable care to all through the integration of health and social care. Rush Social Work and Community Health is excited to partner with SSWLHC to keep advancing the movement to meet urgent needs today and transform the system for tomorrow.



Excellence is just the beginning.

Partners are SDOH Innovators addressing health and equity disparities affecting diverse, under-served and vulnerable populations.



Our work serves as a bridge between medical care and what a person can accomplish in their own home. We focus on social work innovations through programs like The Southern California Geriatric Social Work Education Consortium (GSWEC) aimed at improving geriatric social work education and field training.

Congratulations to June Simmons, MSW, Partners CEO and Past-President of SSWLHC and Heather Brungardt, LCSW, Vice President of Workforce Development and Immediate Past President of SSWLHC as this year's conference presenters.

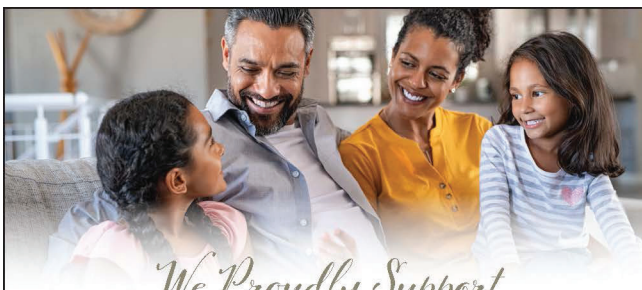


Partners in Care
FOUNDATION

The Social Determinants Innovators

Visit www.picf.org to learn more about Partners and its SDOH innovations.

Like/Follow us: [f](#) [in](#) [yt](#) [tw](#)



We Proudly Support **Society for Social Work Leadership in Health Care**

Palo Verde Behavioral Health has been providing mental health services and substance use treatment in the Tucson area since 1960. With the understanding that each patient and family is unique, we deliver individualized care to help achieve positive outcomes.

To find out more, visit paloverdebh.com.



Palo Verde
BEHAVIORAL HEALTH

2695 N. Craycroft Road | Tucson, Arizona 85712
520-322-2888 or toll-free at 1-844-884-CARE (2273)
Fax: 520-322-2818

Physicians are on the medical staff of Palo Verde Behavioral Health, but, with limited exceptions, are independent practitioners who are not employees or agents of Palo Verde Behavioral Health. The hospital shall not be liable for actions or treatments provided by physicians. Model representations of real patients are shown. Actual patients cannot be divulged due to HIPAA regulations. For language assistance, disability accommodations and the non-discrimination notice, visit our website. 211040-1685 6/21



SMITH COLLEGE

School for Social Work

In a time of crisis, go beyond.

Smith College School for Social Work offers programs that surpass the traditional.

Low-residency M.S.W. and Ph.D. programs

- Rigorous on-campus education in Northampton, MA, alternating with off-campus training at leading sites around the country

Postgraduate professional education offerings

- Stay on the cutting edge through online coursework designed to fit your schedule

**Go beyond traditional
practice today.
Smith College SSW.**

ssw.smith.edu
sswadm@smith.edu

